

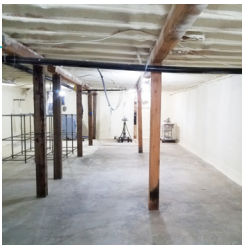
# SPRAYED. SEALED. SECURED.

## SPRAY FOAM INSULATION

# SUNVEK

Spray foam wall insulation is for homes, construction, pole structures, metal buildings, storage tanks, and so much more.

Spray foam creates a thick insulating barrier which expands when applied and provides high-quality insulation.



Concrete walls and floors can be sealed with foam.

### ABOUT SPRAY FOAM INSULATION

Spray foam wall insulation completely seals to the cavity and is a water-resistant product which often acts as both a vapor and air barrier. It is mold and mildew resistant and free of the dust which is typical of other insulation systems.

### CLOSED CELL SPRAY FOAM INSULATION

Closed cell spray foam insulation is a high-density product which works as a vapor and air barrier. It improves the strength of the structure and is lightweight and wind resistant. Closed cell spray foam works extremely well in pole buildings where it is difficult to hang insulation or achieve the desired R Value with traditional insulation products. R Value 5.5 to 6.5 per inch.

### OPEN CELL SPRAY FOAM INSULATION

Open cell spray foam insulation is a low-density product which works as an air barrier. It is water blown and environmentally friendly. R Value 3.5 per inch.

### THERMAL & IGNITION BARRIERS

Spray applied fire coatings may be used over the insulation or drywall may be installed.

ENERGY SAVINGS  
SAVE UP TO

# 50%

ON ENERGY BILLS WITH  
FOAM INSULATION

REQUEST A QUOTE!

509.842.7404

info@sunvekwa.com

S U N V E K W A . C O M



# SPRAY FOAM INSULATION EXAMPLES

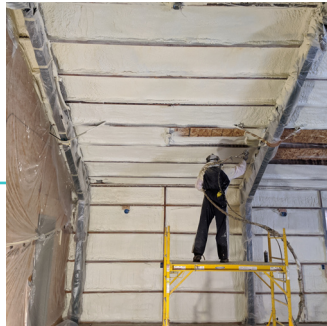
## SPRAY FOAM

R-54 foam fills, fully adheres, and does not lose R value. Foam is trimmed back flush with trusses.



## CLOSED CELL FOAM

Surfaces are protected, foam is sprayed in then scraped off the 2x4 wall studs. It is finished with an acrylic white coating.



## TREEHOUSE PROJECT: CLOSED CELL FOAM

Ceiling, walls, floor joists, and top plate are all sealed with R-38.5 closed cell foam insulation.



## OPEN CELL FOAM

Open cell foam sprayed into the lid.

